

Datasheet

Subject to technical alteration
Issue date: 10.04.2017



Application

Batteryless window handle for status monitoring of windows (option lockable available) with EnOcean technology. When actuated, the handle transmits a radio signal with the handle position to an actuator or central control unit in order, for example, to activate an energy lock. This can be used to optimize energy consumption in the building, since the heating or ventilation is deactivated when the windows are open.

Security Advice – Caution



The installation and assembly of the device should only be performed by authorized personnel.

The product should only be used for the intended application. Unauthorised modifications are prohibited! The product must not be used in relation with any equipment that in case of a failure may threaten, directly or indirectly, human health or life or result in danger to human beings, animals or assets. Ensure all power is disconnected before installing. Do not connect to live/operating equipment.

Please comply with

- Local laws, health & safety regulations, technical standards and regulations
- Condition of the device at the time of installation, to ensure safe installation
- This data sheet and installation manual

Notes on Disposal



As a component of a large-scale fixed installation, Thermokon products are intended to be used permanently as part of a building or a structure at a pre-defined and dedicated location, hence the Waste Electrical and Electronic Act (WEEE) is not applicable. However, most of the products may contain valuable materials that should be recycled and not disposed of as domestic waste. Please note the relevant regulations for local disposal.

Technical Data

| | |
|-----------------------|---|
| Radio technology | EnOcean (IEC 14543-3-10) |
| Frequency | 868 MHz |
| Antenna | internal transmitting antenna |
| Power supply | maintenance-free, electrodynamic energy generator |
| Transmission interval | turning the window handle |
| Enclosure | aluminium pure white painted, aluminium steel grey, stainless steel |
| Ambient condition | +5..+40 °C, max. 80% rH non-condensing |
| Mounting | Square spindle, variable lengths (for tread depth 32..42 mm) |
| Notes | lockable (option) |

Overview of the radio telegrams

EEP

The structure of the data contained in the telegram can be found in the EEP (EnOcean equipment profile) list provided by the EnOcean Alliance: <http://www.enocean-alliance.org/EEP/>.



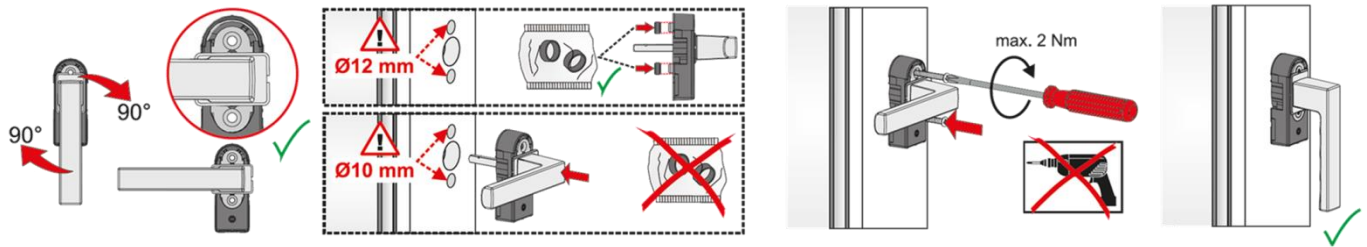
SRG02

F6-10-01

Mounting Advice

First, the old window handle must be dismantled. Therefore, the window handle must be turned into the position "open". Release the fixing screws and remove the window handle.

Afterwards, process as follows:

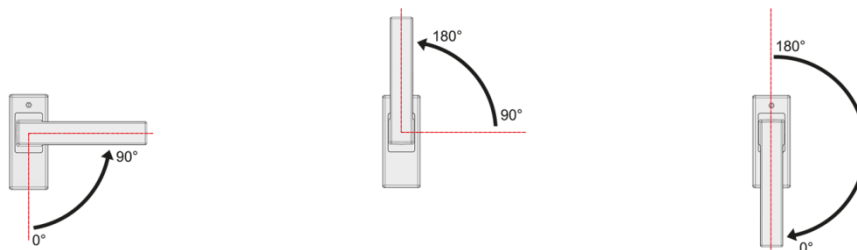


Put the SRG01 window handle in the 90° position and rotate the cover by 90°.

Put the SRG01 window handle including the wireless transmitter to the window profile and tighten the SRG02 window handle and the wireless transmitter by means of the supplied thread screws to the window profile. Afterwards, the cover should be turned back into the closed position.

Function Description

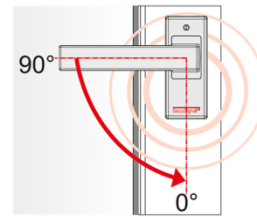
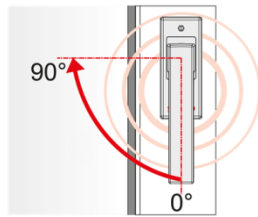
The window handles must be turned to an exact vertical or horizontal position to function properly.



Teach-in process

The teach-in process of the window handle should ideally be done before mounting the same to the windows. Mounting is only made after the teach-in process. To effect teach-in process, the corresponding receiver is put into the learn mode. Afterwards, the window handle shall be turned from the closed position into the opened position and back again.

Further information on the programming can be found in the data sheet of the corresponding receiver.



Dimensions (mm)

